

Challenges and Opportunities: Building Sustainable Surveillance Systems

Ann Moen

Chief, Influenza Preparedness and Response

IHM, WHE, World Health Organization

ANISE Meeting Madagascar

March 19, 2018

Sustainability Defined

Noun: the ability to be maintained at a certain rate or certain level

Surveillance context:

A country's ongoing maintenance and support of a routine virologic and epidemiologic surveillance system including the capacity to financially maintain the system.

Sustainability Components

PE

PROGRAM EVALUATION

Analyzing your program for effectiveness and efficiency

PC

PROGRAM CAPACITY

Internal resources and support needed to effectively manage your program

SP

STRATEGIC PLANNING

Systematic process that guides your program's direction, goals, and strategies

Co

COMMUNICATIONS

Conveying information to stakeholders and the public about your program

F

FUNDING

Establishing a financial base for your program

P

PARTNERSHIPS

Establish and foster connections between your program and its stakeholders

Know your context and take advantage!!

New Global Program of Work (GPW 13)

Value for Money

Impact/Outcomes

Economy

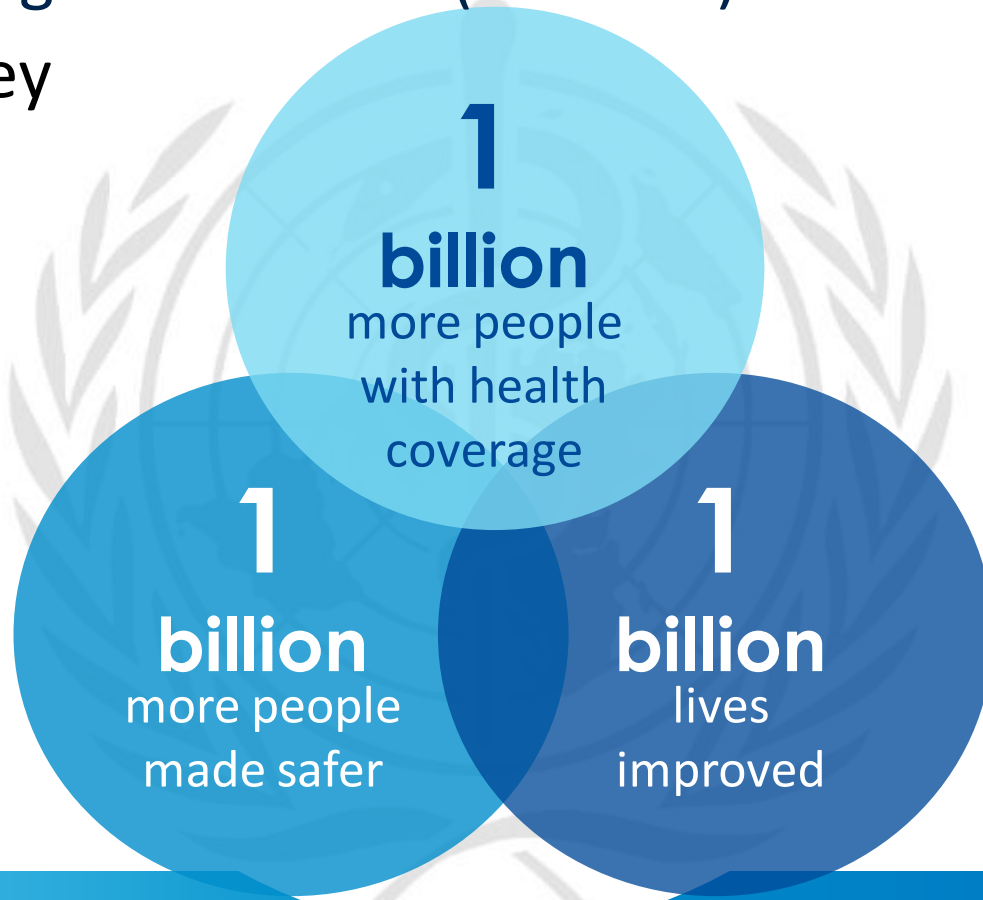
Efficiency

Effectiveness

Country Focus

IHR, JEE

IDSR



CRITICAL:

Your System

Your Goals

Public Health

“Our goal is clear - to make WHO a modern organization that works seamlessly to make a measurable difference in people’s health at country level.”

Dr Tedros

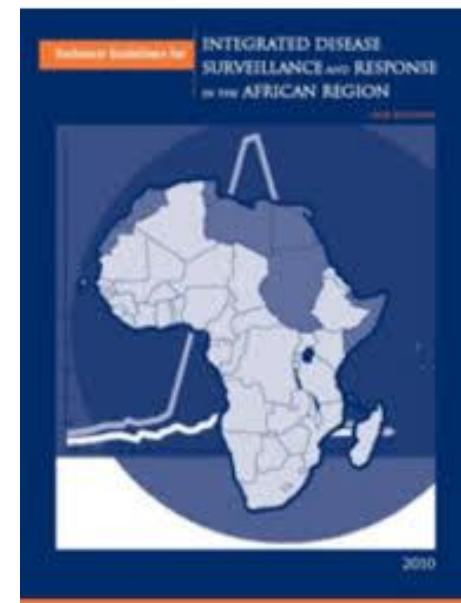
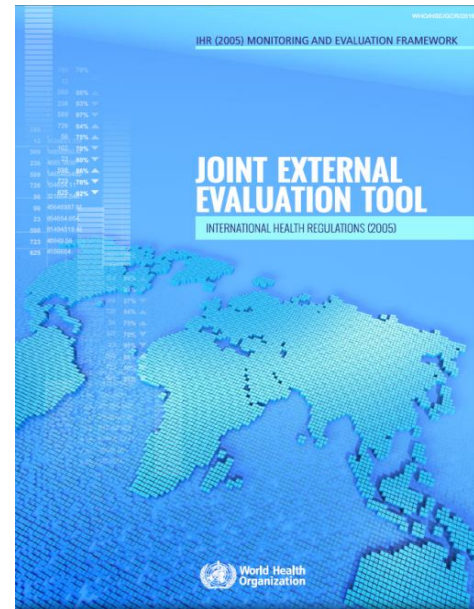
Address to the Executive Board, January 2018

Influenza: The “Poster Child”

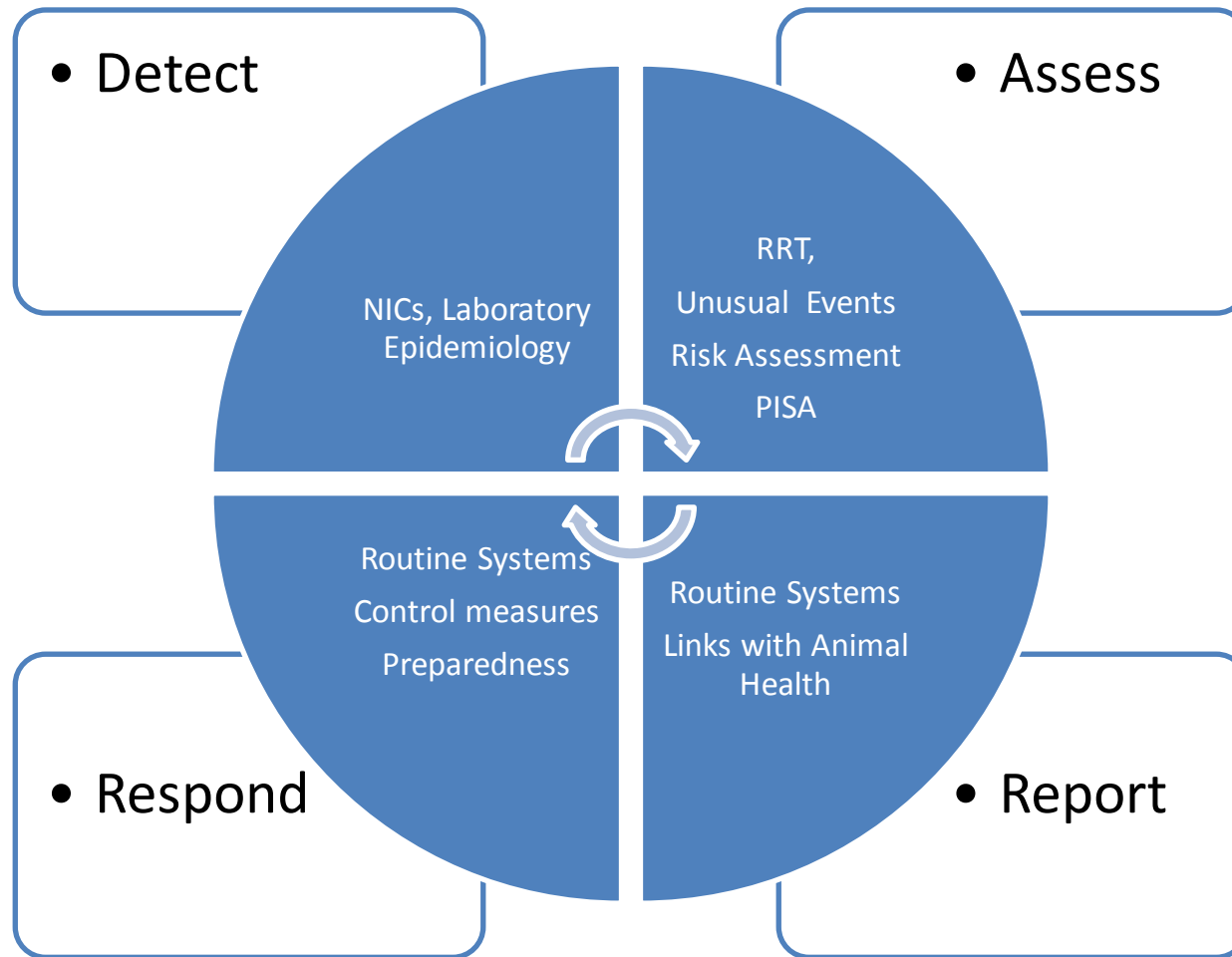
Cambridge Dictionary: Something that is used to represent a particular quality

Used in a Sentence: “Influenza is the perfect example of a poster child for capacity building”

Why: Influenza affects every country every year



Building IHR Core Capacities: Influenza



JEE Tool 19 Technical Areas

Prevent

- National Legislation, Policy and Financing 
- IHR Coordination, Communication and Advocacy 
- Antimicrobial Resistance 
- Zoonotic Disease 
- Biosafety and Biosecurity 
- Immunization 

Respond

- Preparedness 
- Emergency Operations 
- Linking Public Health and Security Authorities 
- Medical Countermeasures and Personnel 
- Deployment 
- Risk communication 

Detect

- National Laboratory System 
- Real-time Surveillance 
- Reporting 
- Workforce Development 

Other

- Points of Entry 
- Chemical Events 
- Radiation Emergencies 



Influenza

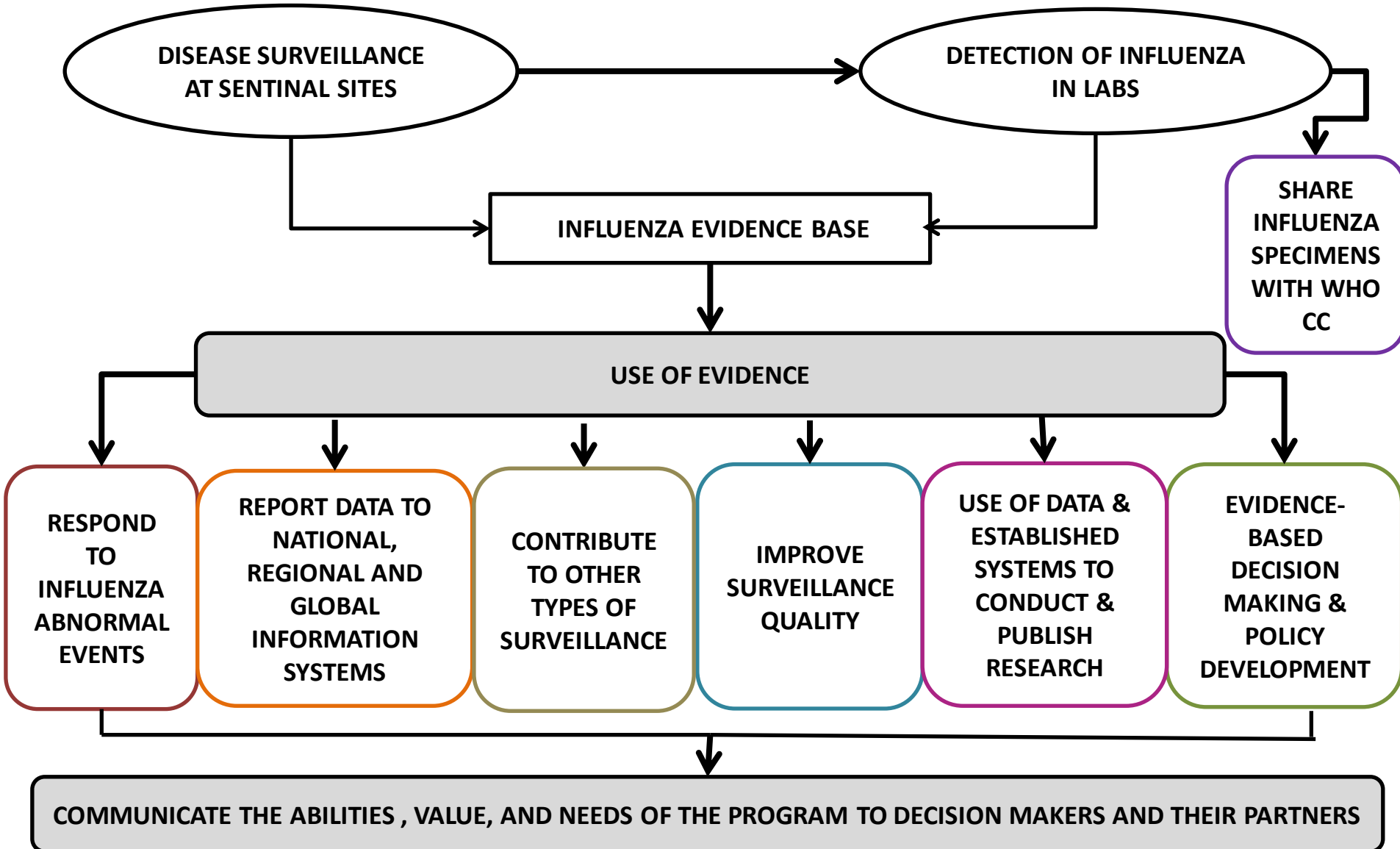


Influenza Related



NOT needed for Influenza

Sustainability: Demonstrating Influenza Program Effectiveness and Value



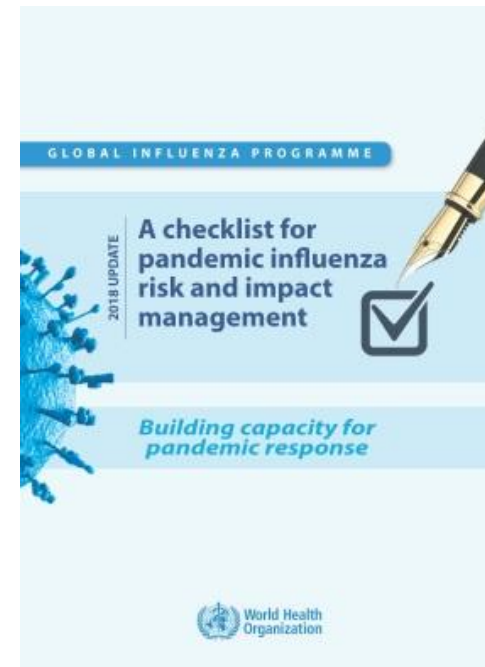
Capacity Building: Preparedness

“A Checklist for Pandemic Influenza Risk and Impact Management: building capacity for pandemic response – 2018 update”

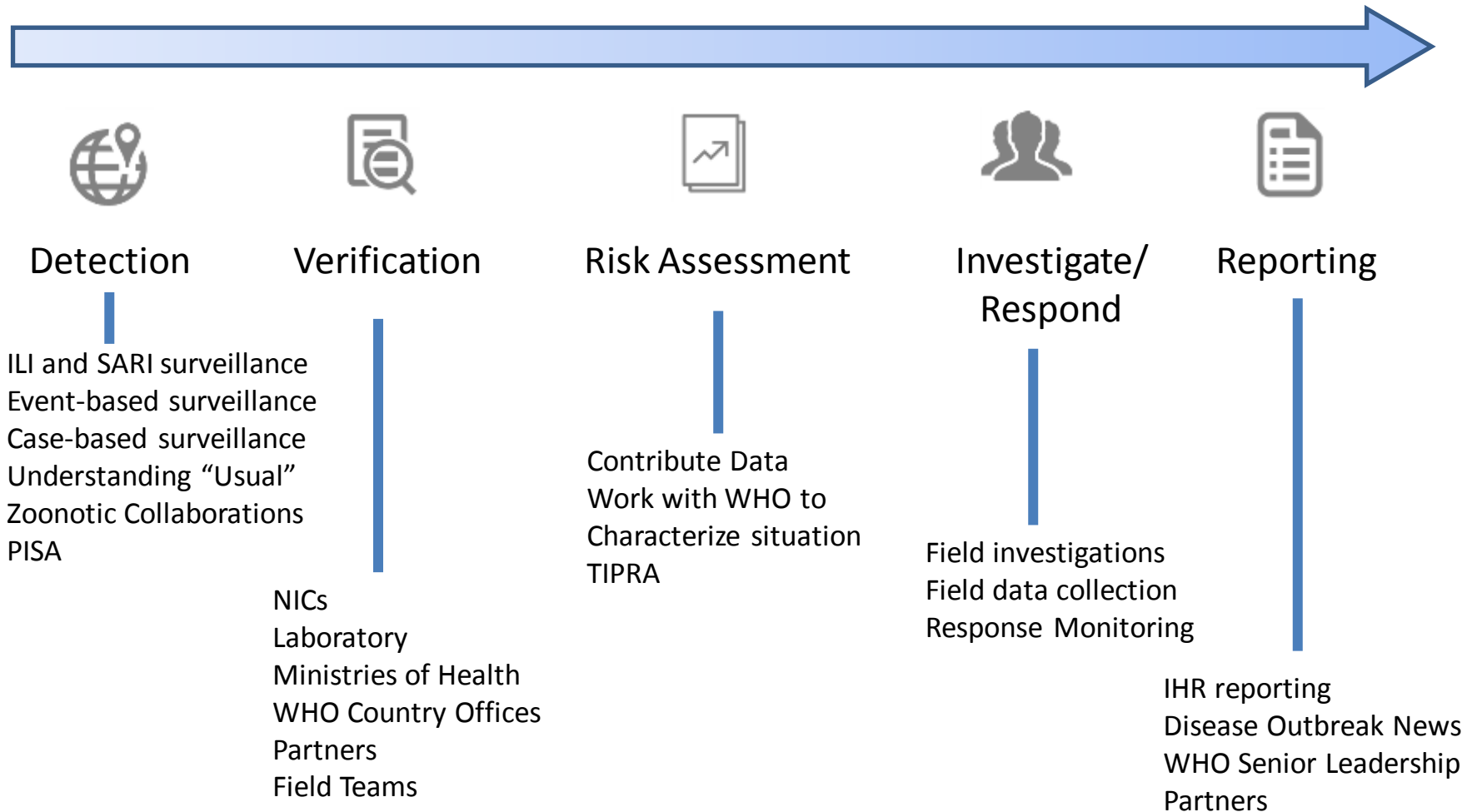
Mapping pandemic influenza preparedness capacities requirements with IHR (2005) core capacity self assessment and Joint External Evaluation (JEE) indicators:

- IHR indicators
 - 10/13 core capacities
 - 19/26 indicators
- JEE indicators
 - 14/19 technical areas
 - 30/48 indicators

http://www.who.int/influenza/preparedness/pandemic/influenza_risk_management_checklist_2018/en/



System Contribution: Health Emergencies and Risk Assessment

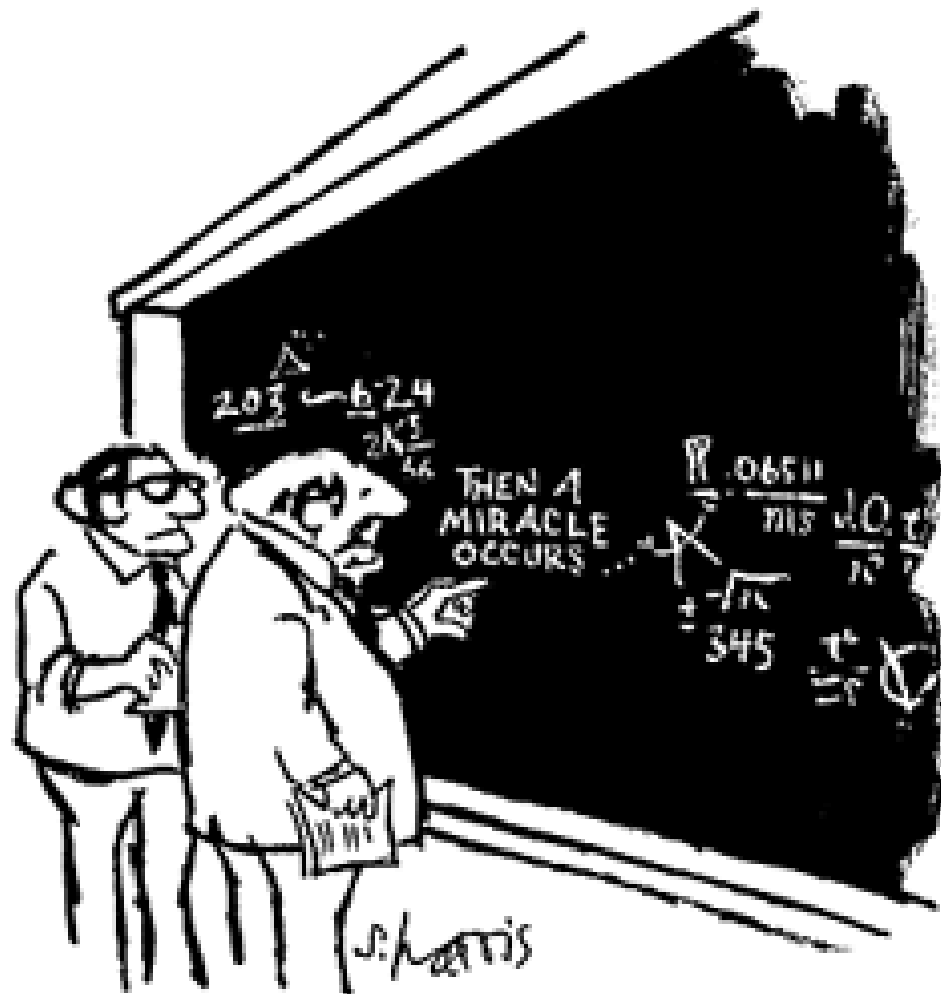


PLANNING IS ESSENTIAL

Smart Decisions are a Must

- ❖ Commitments from Ministry of Health regarding financing for the Program—especially personnel and routine activities
- ❖ Prioritize donor funds for one time needs and improvements
- ❖ Explore integration....show how influenza benefits other EID programs
- ❖ Identify new partnership opportunities- Starting with MOH, Government
- ❖ Advertise/promote the successes of your program
- ❖ Plan to reduce low performing sentinel sites
- ❖ Ensure relevant data is being collected and shared and used
- ❖ Develop a long-term financial plan
- ❖ Develop a timeline with specific actions
- ❖ Meet your country goals/needs for public health





"I think you should be more explicit here in step two."